



Community Action Coalition
for South Central Wisconsin, Inc.

United Way of Jefferson &
North Walworth Counties



JEFFERSON COUNTY “WHERE TO FIND”



DIRECTORY OF BASIC SERVICES

The “Where to Find” guide may not be reproduced without the written consent of:

Community Action Coalition for South Central Wisconsin, Inc.

114 E. Main Street,

Watertown, WI 53094

Phone: (920) 262-9667; FAX (920) 262-9559

E-mail cacwtn@cacscw.org

Copies of the guide can be picked up at the CAC office.
Additional guides are available for \$1.00, plus shipping and handling.

For Spanish Translation call the Jefferson County Workforce Development Center at (920) 674-7500.
Translator is not available at all times, all calls will be returned.

Para traducción a español favor de llamar al Departamento del Trabajo en el Condado de
Jefferson al tel. (920)674-7500.

El traductor no esta disponible en todo momento, pero todas llamadas serán contestadas..

Published: August 2007

Community Action Coalition for South Central Wisconsin, Inc. (CAC)

Community Action Coalition for South Central Wisconsin, Inc. (CAC) is a community action program, serving both urban and rural communities in Dane, Jefferson and Waukesha Counties. The organization began in 1966 and exists to enhance communities by developing the economic and social capacities of individuals and families so that poverty can be reduced. To fulfill our mission, CAC provides a variety of services and products to the community at no-cost in order to improve the quality of life for those in need. CAC has four major divisions and provides direct programming in areas of food distribution to food pantries and meal sites; eviction and homelessness prevention through case management; financial assistance and education; community advocacy and collaboration with landlords, service providers, volunteers and other stakeholders. For more information on CAC in Jefferson County, call **(920)262-9667** or visit www.cacscw.org.

First Call for Help & Information

Need help? Have a question? First Call for Help and Information, in partnership with the Doris M. Highsmith Trust and the United Way of Jefferson & North Walworth Counties, is a confidential information and referral service serving the greater Jefferson County area.

First Call is a community service designed to link any person with questions or concerns about health and human services situations to the agency or organization best able to assist a caller with their request. First Call can be reached at **920.563.9555** or toll free at **1.800.879.1918**.

First Call is a member of AIRS, the Alliance of Information and Referral Services.

United Way of Jefferson & North Walworth Counties

The United Way of Jefferson & North Walworth Counties is serving the needs of the community by working to improve community health; strengthen families; address the needs of at risk youth; build and maintain family financial stability and integrate diverse populations. These five areas of need were identified by community leaders and adopted by the United Way to focus the organization's financial and volunteer efforts.

The United Way of Jefferson & North Walworth Counties partners with over 32 health and human service agencies to provide local services to over 14,000 people throughout the communities of Fort Atkinson, Helenville, Jefferson, Lake Mills, Palmyra, Sullivan and Whitewater; United Way - investing in what matters; community, working together and results. For more information please visit www.ourunitedway.com or call **920.563.8880**.

<u>TABLE OF CONTENTS</u>	<u>PAGE NUMBER</u>
Assistance Agencies	4-6
Business Information	7
Children/Family	7-11
Employment and Training	11-12
Farm Family Assistance	12-13
Farm Workers-Migrant and Seasonal	13
Financial Assistance	14
Food Assistance	14-15
Health Care	15-18
Housing Assistance Programs	18-19
Housing – Low Income /Elderly/Disabled/Handicapped	19-20
Legal Services	20-21
Political Representatives	21
Seniors	21-22
Transportation	22-23
Utility / Energy Assistance	23



Assistance Agencies

First Call For Help and Information (920)563-9555
 (Has information on all Jefferson County Agencies)

COMMUNITY ACTION COALITION FOR SOUTH CENTRAL WI, INC. (CAC) (920)262-9667

CAC provides information and referrals, crisis intervention and client advocacy services to help Jefferson County families meet their basic needs for food, shelter, clothing, health, energy, transportation, work/training, legal, financial services, etc. CAC administers housing and case management programs to eligible households in Jefferson County (Certain income guidelines apply.)

ABUSE VICTIMS, DOMESTIC

People Against Domestic & Sexual Abuse (PADA) (800)228-7232
 Jefferson County (920)674-6768

People Against Violent Environment (PAVE) (800)775-3785
 Dodge County (920)887-3785

Victim/Witness Assistance – Dept. of Justice (800)446-6564
 District Attorney's Office: Jefferson County (920)674-7220

ALCOHOL ABUSE

Alcoholics Anonymous (AA)	Madison Milwaukee	(608)222-8989 (414)771-9119
Cambridge	Presbyterian Church, 313 E. Main St.	(608)423-3001
Dodge County	Dodge County Human Services, 143 E. Center St, Juneau	(920)386-3750
Fort Atkinson	Fort Atkinson Memorial Health Services 611 Sherman Ave St. Peters Episcopal, 302 Merchants Ave	(920)568-5000 (920)563-3889
Jefferson	Trinity Lutheran Church, 314 Barrie St. Jefferson County Human Services, N3995 Annex Rd. St. John's Baptist Church, E. North St.	(920)563-4145 (920)674-3105 (920)674-2025
Johnson Creek	United Methodist Church, 220 N. Watertown St	(920)699-5100
Lake Mills	Moravian Church, 301 College St.	(920)648-2035
Oconomowoc	Lake Area Club, N35878 Lake Dr. Rogers Memorial Hospital, 34700 Valley Rd.	(262)567-9912 (800)767-4411
Palmyra	St. Mary's Catholic Church, 919 W. Main	(262)495-2395
Waterloo	St. Paul's Lutheran Church, 226 E. Madison St.	(920)478-2570
Watertown	Immanuel Lutheran Church, 204 N. 10 th St Moravian Church, 510 Cole St. St. Paul's Episcopal Church, 413 S 3 rd St. Tri-County Unity, 104 N 1 st St.	(920)261-1663 (920)261-7494 (920)261-1150 (920)261-2301
Whitewater	Watertown Memorial Hospital, 125 Hospital Drive Sable House 131 N. Fremont St. St. Luke's Episcopal, 140 S. Church St. St. Patricks Catholic Church, 1235 W Main St	(920)261-4210 (920)473-3811 (262)473-8980 (262)473-3143

ALANON: (800)484-7915 (920)262-2592

(AODA) ALCOHOLISM INFORMATION AND TREATMENT CENTERS:

Directions Counseling Center: 129 Hospital Dr (Watertown)	(920)262-4800
Dodge County Human Services: 199 Home Rd. (Juneau)	(920)386-3500
FA Care-Fort Atkinson Hospital: 611 Sherman Ave.	(920)568-5000
Jefferson County Human Services: N3995 Annex Rd.	(920)674-3105
Mercy Options-Mercy Health Systems	(608)756-5555
Newstart: 1015 Gammon Lane (Madison)	(608)271-4144
Rogers Memorial Hospital (Oconomowoc)	(800)767-4411
Wisconsin Community Mental Health Counseling Centers, Inc.	(262)473-6119

ALPHA PREGNANCY COUNSELING (920)261-9207

ARTHRITIS FOUNDATION (800)242-9945
 ASTHMA AND ALLERGY INFORMATION LINE (800)822-ASMA

BADGERCARE		(920)674-7500
CANCER	American Cancer Society	(866)ACS-2345
CENTERS FOR PREVENTION AND INTERVENTION		(608)246-7600
CHAMBER OF COMMERCE:		
Cambridge		(608)423-3780
Fort Atkinson		(920)563-3210
		(888)see-fort
Jefferson		(920)674-4511
Lake Mills		(920)648-3585
Waterloo		(920)478-2500
Watertown		(920)261-6320
Whitewater		(262)473-4005
		(800)499-8687
HISPANIC Chamber of Commerce		(414)643-6963
CONSUMER PROTECTION, WI DEPARTMENT OF AGRICULTURE		(800)422-7128
CYSTIC FIBROSIS FOUNDATION		(800)472-7720
DIABETES ASSOCIATION	American Diabetes Association	(800)342-2383
DISABILITIES	Badger Assn. of the Blind and Visually Impaired	(414)258-9200
		(877)258-9200
	Family Voices of Wisconsin	(608)239-1364
	Societies Assets	(800)261-8181
	Wisconsin First Step	(800)642-7837
	Wisconsin Coalition for Advocacy, Inc.	(800)928-8778
DISASTER VICTIMS (FLOODS/FIRES)		
American Red Cross: Hotline		(800)236-8680
Watertown		(920)261-1916
Fort Atkinson		(920)563-3055
Salvation Army:		(800)924-6407
ELDERLY	Dodge County Elderly Services	(920)386-3580
	Jefferson County Elderly Services	(920)674-3105
EPILEPSY ASSOCIATION		(800)693-2287
EQUAL RIGHTS		
Equal Employment Opportunites Commission (EEOC)		(414)297-1111
Wisconsin Department of Workforce Development (DWD)		TDD(608)264-8752
Equal Rights Division (ERD)		(608)266-6860
GAMBLERS ANONYMOUS /GAMANON		(920)387-1151
Wisconsin Counsel on Problem Gambling:		(800)426-2535
Tri-County Unity Club – 104 N. 1st St. Watertown		(920)261-2301
GOODWILL INDUSTRIES	Fort Atkinson	(920)563-8950
HEALTH CARE ISSUES	ABC for Health Project	(800)585-4222
	Dodge County Health Dept.	(608)261-6939
	Jefferson County Health Dept.	(920)386-3670
	Watertown Health Dept.	(920)674-7275
		(920)262-8090
HOUSING-DISCRIMINATION/FAIR HOUSING/LANDLORD-TENANT ISSUES:		
Community Action Coalition for South Central Wisconsin, Inc.(CAC)		(920)262-9667
Consumer Protection, WI Dept. of Agriculture		(800)422-7128
Equal Opportunities Commission		(608)266-4910
Legal Action of Wisconsin		(800)362-3904
Tenant Resource Center, 122 State St., Madison, WI		(608)257-0006
IMMIGRATION, NATURALIZATION and CITIZENSHIP		(800)375-5283
MIGRANT WORKERS/SEASONAL FARM WORKERS		(800)279-8667
UMOS: United Migrant Oppertunities Services	Beaver Dam Office	(920)887-7233
	Madison Office	(608)334-8378

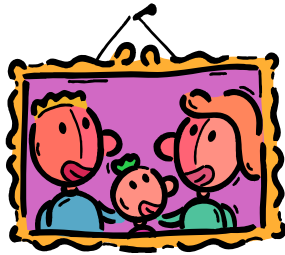
Centro Hispano of Dane County Inc. Madison		(608)255-3018
NARCOTICS ANONYMOUS	Wisconsin Hotline	(800)240-0276
SOCIETY ASSEST	Assist w/ disabilities	(800)378-9128
VETERANS	Jefferson County Veterans Service Office Dodge County Veterans Service Office	(920)674-7240 (920)386-3798



Business Information

APPRENTICESHIPS	Department of Workforce Development (DWD)	(608)266-3131
BETTER BUSINESS BUREAU OF WISCONSIN	(800)273-1002	(414)847-6000
BUILDING PERMITS AND ZONING CODES	Madison Jefferson County Watertown	(608)266-9884 (920)674-7130 (920)262-4060
CONSUMER PROTECTION AGENCY		(800)422-7128
EMPLOYEES AND EMPLOYMENT PRACTICES	State: Department of Workforce Development Employment Standards Division	(608)242-4900 (414)297-3585
EQUAL RIGHTS – STATE DIVISION	Madison Milwaukee	(608)266-6860 (414)227-4384
FEDERAL INFORMATION CENTER		(800)688-9889
FINANCING	State: WHEDA Federal: SBA	WI Housing and Economic Development Madison WHEDA Milwaukee WHEDA WHEDA On-line support U.S. Small Business Administration
		(800)642-6474 (608)266-7884 (414)227-4039 (800)334-6873 (800)827-5722
FRANCHISING	Department of Financial Institutions (DFI)	(608)261-9555
MICRO LOAN PROGRAM	Madison Milwaukee Wisc. Women's Bus. Initiative Corp. Impact Seven Inc. Wisc. Supplier Development Council (WSDC)	(608)441-5263 (414)297-3941 (414)372-2070 (715)357-3334 (608)241-5858
MINORITY BUSINESS DEVELOPMENT	Madison Milwaukee	(608)267-9550 (414)372-3936
NATIONAL ASSOCIATION OF WOMEN'S BUSINESS OWNERS	Madison Milwaukee	(608)257-5450 (414)358-9270
OSHA (OCCUPATIONAL SAFETY AND HEALTH ADMINISTRATION)	U.S. Department of Labor Milwaukee Madison	(414)297-3315 (608)441-5377
SCORE (Service Core of Retired Executives)		(608)441-2820
SMALL BUSINESS ADMINISTRATION (SBA)	Madison Milwaukee	(608)441-5263 (414)297-3941
SMALL BUSINESS DEVELOPMENT CENTERS (SBDC)	UW-Madison	(608)263-2221

	UW-Whitewater UW-Milwaukee	(262)472-3217 (414)227-3240
SMALL BUSINESS OMSBUDSMAN	Wisconsin Department of Commerce Community Based Economic Development	(608)267-0297 (608)266-8934
TAXES	Wisconsin Dept. of Revenue-Compliance Bureau Wisconsin Dept. of Revenue-Income, Sales, Inheritance and Excise Tax To order Federal forms	(608)266-2776 (608)266-2772 (800)829-1040
UNEMPLOYMENT COMPENSATION		(800)494-4944
UNIVERSITY OF WISCONSIN –EXTENSION	Jefferson County Extension Dodge County Extension	(920)674-7295 (920)386-3790
WISCONSIN BUSINESS RESOURCES	Business Hotline	(800)435-7287
WISCONSIN DEPARTMENT OF WORKFORCE DEVELOPMENT(DWD)	Unemployment Insurance Vocational Rehabilitation Worker's Compensation	(800)822-5246 (920)674-7500 (608)266-1340
WOMEN'S DEVELOPMENT CENTER	Waukesha County Technical College	(262)691-5400
WORKERS COMPENSATION	Department of Workforce Development (DWD)	(608)266-1340
WORKFORCE DEVELOPMENT CENTER	Jefferson	(920)674-7500
WORKPLACE SAFETY AND REGULATIONS	OSHA	(608)266-9383



Children and Family

ABC FOR HEALTH	Help for parents of children with special needs	(800)585-4222
ADOPTION AGENCIES	Children's Service Society of Wisconsin	(800)653-2779
BIG BROTHERS/BIG SISTERS	Health and Wellness Center, Watertown Dodge County	(888)904-5437 (920)563-2876 (920)261-2315 (920)885-5991
BIRTH TO THREE	Jefferson County Early Intervention Program Dodge County Human Services Headstart: Health and Wellness Center (HAWC)	(920)674-7386 (920)386-3670 (920)261-8716
BREAST FEEDING CLASSES	Watertown Memorial Hospital Jefferson County WIC Program Dodge County WIC Program Watertown Health Dept.	(800)371-3090 (920)262-4267 (920)674-7189 (920)386-3670 (920)262-8090
BRIARPATCH, INC.	24 Hour Teen Hotline	(608)251-1126
CENTER FOR BLIND AND VISUALLY IMPAIRED CHILDREN, INC.		(414)355-3060
CEREBRAL PALSY	Information Source	(608)273-4434
CHILD ABUSE	Child Help – National Child Abuse Hotline	(800)422-4453

CHILD ABUSE AND NEGLECT	Jefferson County Human Services Dodge County Human Services	(800)422-4453	(920)674-3105 (920)386-3500
CHILD CARE PROVIDERS	Jefferson County Workforce Development Dodge County Human Services Community Coordinated Child Care referral(4C's) Mary Linsmeir Preschool and Infant Care		(920)674-7500 (920)386-3750 (800)750-KIDS (920)262-9060
CHILD CARE PROVIDERS-CERTIFICATION PROCESS	Jefferson County Workforce Development Center Dodge County Human Services MATC Watertown Campus		(920)674-7500 (920)386-3750 (920)206-8000
CHILD FIND			(800)426-5678
CHILD SUPPORT	Kids Information Line-Statewide Dodge County Jefferson County		(800)991-5530 (920)386-3640 (920)674-7255
CHILDREN FIRST	Jefferson County Workforce Development Dodge County Human Services		(920)674-7500 (920)386-3750
CHILDREN WITH SPECIAL HEALTH CARE NEEDS	Department Of Health and Family Services Jefferson County Health Department	(800)371-3090	(608)266-3886 (920)674-7275
CHILDREN'S HOSPITAL OF WISCONSIN			(414)266-2000
CHILDREN'S SAFETY NETWORK	National Farm Medicine Center Marshfield Clinic		(800)662-6900 (800)782-8581
CHILDREN'S TRUST FUND	Parenting support groups in your area.		(800)262-9922
CHRISTMAS NEIGHBOR'S PROGRAM	Jefferson County Information		(920)674-4499
CLEFT PALATE	Cleft Palate Foundation		(800)24-CLEFT
CLOTHING FOR CHILDREN	Koats for Kids, Jefferson - CAC Palmyra United Methodist Church St. Vincent De Paul Stores: Jefferson Lake Mills Watertown Watertown Family Aid:		(920)262-9667 (262)495-2540 (920)674-4546 (920)648-2800 (920)261-2691 (920)262-8099
COMMUNICABLE DISEASES	Watertown Health Department Jefferson County Health Department Dodge County Health Department		(920)262-8090 (920)674-7275 (920)386-3670
COMMUNITY COORDINATED CHILD CARE (4 C'S)	Childcare referral agency		(800)750-KIDS
DAY CARE FOR SICK CHILDREN	Watertown Memorial Hospital Oconomowoc Memorial Hospital		(920)261-4210 (262)569-940
DAY CARE SUBSIDIES	Jefferson County Workforce Development Dodge County Human Services		(920)674-7500 (920)386-3760
DENTAL PROGRAM	Jefferson County. Health Dept. - Rock River Free Clinic		(920)563-4372
DIABETES ASSOCIATION	Juvenile Diabetes Association		(800)342-2383
DOWN SYNDROME	National Down Syndrome Society		(800)221-4602
EARLY CHILDHOOD EXCEPTIONAL EDUCATIONAL NEEDS PROGRAM	Screening of skills for children ages 3-5 for early intervention.:	Fort Atkinson Jefferson Johnson Creek Lake Mills Waterloo Watertown	(920)563-7804 (920)674-7044 (920)699-2811 (920)648-2338 (920)478-2168 (920)262-1460
FAMILIES COME FIRST	Program for families and delinquent youth.		(920)674-7290

FAMILY COURT COMMISSIONER	Jefferson County Courthouse Dodge County Courthouse	(920)674-7101 (920)386-3620
FAMILY RESOURCE CENTERS (FRC)	Dodge County Jefferson County Watertown	(920)887-7503 (920)674-0666 (920)261-2450
FAMILY SUPPORT PROGRAM (FSP)	Jefferson County Human Services Dodge County Human Services	(920)674-3105 (920)386-3500
FOSTER CARE	Jefferson County Human Services Dodge County Human Services	(920)674-3105 (920)386-3750
4-H, UNIVERSITY OF WISCONSIN-EXTENSION	Jefferson County Dodge County	(920)674-7295 (920)386-3790
HEADSTART-DODGE COUNTY	Beaver Dam Center Early Headstart	(920)885-7431 (920)386-3500
HEADSTART -JEFFERSON COUNTY	Jefferson (N3995 Annex Rd.) Hebron (N2313 County Hwy. D) Watertown (415 S. 8 th St) Waterloo (348 W. Madison St.)	(920)674-5577 (262)593-5979 (920)261-8716 (920)478-3594
HEALTH AND WELLNESS CENTER (HAWC)	415 S. 8 th St., Watertown	(920)262-8555
HEALTHCHECK CLINIC	Watertown Health Department Jefferson County Health Department Dodge County Human Services Dodge-Jefferson Healthier Community Partnership	(920)262-8090 (920)674-7275 (920)386-3500 (920)206-7797
HEALTHY START	Jefferson County Human Services Dodge County	(920)674-7500 (920)386-3670
HOME VISITOR PROGRAM	Help with the stress of parenting Dodge-Jefferson Healthier Community Partnership Jefferson County Health Dept Jefferson County Human Services Watertown Health Department Dodge County Human Services Watertown Family Center Watertown Memorial Hospital Fort Atkinson Memorial	(920)206-7797 (800)371-3090 (920)674-3105 (920)262-8090 (920)386-3670 (920)261-2450 (920)261-4210 (920)568-5000
INFANT DEVELOPMENT PROGRAM	Department of Health and Family Services Birth to Three Program Dodge County Human Services Dodge-Jefferson Healthier Community Partnership Jefferson County Early Intervention Program	(608)266-8276 (920)386-3500 (920)206-7797 (920)674-7386
JUVENILE DIABETES FOUNDATION		(800)223-1138
LEARNING DISABILITIES	Wisconsin Association for Children / Adults with Learning Disabilities	(866)lda-wisc
MAKE A WISH		(800)236-9474
MARCH OF DIMES	Wisconsin Chapter	(800)747-3463
MUSCULAR DYSTROPHY ASSOCIATION		(800)572-1717
PARENT AID SERVICES	Jefferson County Human Services Dodge County Human Services	(920)674-3105 (920)386-3750
PARENT MENTOR PROGRAM	Jefferson County Human Service Dodge County Human Service Head Start Watertown Family Center	(920)674-3105 (920)386-3670 (920)674-5577 (920)261-2450
PARENTING CLASSES:	Dodge County Human Services Fort Atkinson Memorial Health Services	(920)386-3750 (800)421-4677 (920)568-5000

	Jefferson County Health Department		(920)674-7275
	Jefferson County Human Services		(920)674-3105
	Head Start		(920)674-5577
	Watertown Family Center		(920)261-2450
	Watertown Elementary Schools		(920)262-1460
	Watertown High School		(920)262-7500
	Watertown Memorial Hospital		(920)261-4210
POISON CONTROL CENTERS			(800)222-1222
POST PARTUM AND PRENATAL CARE COORDINATION			
	Jefferson County Health Dept.		(920)674-7275
	Watertown Health Department		(920)262-8090
	Dodge County Human Services		(920)386-3670
PREGNANCY	Alpha Pregnancy Counseling Center	(800)924-6073	(920)261-9207
	Planned Parenthood – Johnson Creek		(920)699-4720
RUNAWAYS			
	Briarpatch		(800)798-1126
	National Center for Missing and Exploited Children		(800)843-5678
	National Runaway Switchboard		(800)runaway
ST. JUDES RESEARCH HOSPITAL	Pediatric Cancer		(800)822-6344
SCHRINER'S HOSPITAL	Medically treatable children		(800)583-6343
SIDS(SUDDEN INFANT DEATH SYNDROME)	National SIDS		(800)221-SIDS
SOCIAL SECURITY AND SUPPLEMENTAL SECURITY INCOME			
	Outreach Locations:	Fort Atkinson Senior Citizens Center	(800)772-1213
		Watertown Senior Citizens Center	(920)563-7773
			(920)262-8099
STUDENT ASSISTANCE PROGRAM (SAP)			
	Watertown Unified School District Administration Office		(920)262-1460
	Watertown High School		(920)262-7500
	Ready Kid's for School: School Supplies		(920)674-7500
W2 (WISCONSIN WORKS)	Jefferson County Workforce Development		(920)674-7500
	Dodge County Human Services		(920)386-3760
WATERTOWN EAST COMMUNITY CENTER	Jefferson County Agencies		(920)206-1260
WATERTOWN FAMILY AID	Watertown Senior Center		(920)262-8099
WATERTOWN FAMILY CENTER	415 S. 8 th Street, Watertown		(920)261-2450
WELL CHILD CLINIC	Jefferson County Health Dept.		(920)674-7455
WIC (WOMEN, INFANT AND CHILDREN) SUPPLEMENTAL FOOD PROGRAM			
	Jefferson County Health Department	(800)371-3090	(920)674-7189
	Dodge County Human Services		(920)386-3680
	Watertown Health Dept.		(920)262-8090
WI CENTER FOR MISSING CHILDREN & ADULTS	Jefferson		(920)674-6960
	Crisis		(877)570-5456
			(414)235-6845
WI COUNCIL ON CHILDREN AND FAMILIES			(608)284-0580
WI FAMILY ASSIST CENTER FOR EDUCATION, TRAINING AND SUPPORT (FACETS)			
	Serves parents of children and adults with disabilities, Newsletter		(414)543-0822
WI FAMILY TIES, INC.	For families with children with serious emotional & behavioral problems		(800)422-7145
WI FIRST STEP	Statewide referral service	TDD(800)282-1663	(800)642-7837
WI SCHOOL FOR THE DEAF	Delavan, WI		(262)728-7116
WI REGIONAL LIBRARY FOR THE BLIND/PHYSICALLY HANDICAPPED			(800)242-8822

WI TELECOMMUNICATIONS RELAY SYSTEM	(800)395-9877	711	(800)947-3529
ZERO TO THREE PROGRAM	Jefferson County Early Intervention Program		(920)674-7386
	Dodge County Human Services		(920)386-3500



Employment and Training

APPRENTICESHIPS			(608)266-3332
BETHESDA LUTHERAN HOME	For Children and Adult with Disabilities		(920)261-3050
DAY CARE LICENSING AND CERTIFICATION	Jefferson County Work Force Dodge County Human Service		(920)674-7500 (920)386-3750
DIVISION OF VOCATIONAL REHABILITATION (DVR)			(800)422-7146
EMPLOYMENT AGENCIES	Adecco Diversified Personnel Services Job Service Office Manpower Temporary Services Spherion Staffing Services Terra Temporary Personnel Tom Sloan and Associates, Inc. Workforce Development Center	Fort Atkinson Fort Atkinson Watertown Dodge County Jefferson County Watertown Watertown Fort Atkinson Watertown Fort Atkinson Watertown Watertown Jefferson	(920)568-9900 (920)563-6926 (920)261-8444 (920)887-7161 (920)674-7500 (920)262-6960 (920)262-0600 (920)563-4000 (920)262-2001 (920)563-3301 (920)262-0300 (920)261-8890 (920)674-7500
FAIR EMPLOYMENT	Equal Rights Division		TDD(608)264-8752 (608)266-6860
JOB CORPS			(800)230-5627
LABOR STANDARDS LAWS			TDD (608)264-8752 (608)266-6860
LIBRARIES and LITERACY PROGRAMS (**)	Beaver Dam Community Library Cambridge Public Library Columbus Public Library Dodge English Language Learners(DELL)** Fort Atkinson- Dwight Foster Public Library ** Jefferson Public Library Jefferson County Literacy Council ** Johnson Creek Library Lake Mills-L.D. Fargo Public Library Palmyra-Powers Memorial Library Waterloo- Karl Junginer Memorial Library Watertown Public Library and Literacy ** Whitewater - Irvin L.Young Public Library St. Mark's Evangelical Lutheran Church - Literacy **	Ext. 26	(920)887-4631 (608)423-3900 (920)623-5910 ** (920)887-4631 ** (920)563-7790 (920)674-7733 ** (920)261-1260 ** (920)675-0500 (920)699-3741 (920)648-2166 (262)495-4605 (920)478-3344 ** (920)261-5757 (262)473-0530 (920)674-2370
OPPORTUNITIES, INC.	Disabled Adults		(920)563-2437
PEACE CORPS			(800)424-8580
TECHNICAL COLLEGES	Blackhawk Technical College - Janesville		(608)756-4121

	Gateway Technical College-Walworth County Campus Madison Area Technical College (MATC):	Fort Atkinson Madison Watertown	(414)741-6100 (920)563-7200 (800)322-6282 (920)206-8000
	Milwaukee Area Technical College Morraine Park Technical College Beaver Dam Waukesha County Technical College (WCTI)		(414)297-6600 (920)887-1101 (262)691-5566
UNIVERSITIES	UW - Whitewater UW - Madison Campus UW - Waukesha Campus	(800)621-5376	(414)472-1234 (608)262-1234 (262)521-5200
UNIVERSITY EXTENTION	Jefferson County Dodge County		(920)674-7295 (920)386-3790
UNITED MIGRANT OPPORTUNITY SERVICE (UMOS)			(800)279-8667
UNEMPLOYMENT COMPENSATION			(800)494-4944
UNEMPLOYMENT COMPENSATION (UC) APPEALS CLINIC			(800)362-3904
VETERANS	Jefferson County Dodge County		(920)674-7240 (920)386-3798
WORKFORCE DEVELOPMENT CENTER			(920)674-7500



Farm Family Assistance

4-H	Jefferson County Dodge County		(920)674-7500 (920)386-3790
BADGERLAND CREDIT			(800)686-1338
DEPARTMENT OF NATURAL RESOURCES	Jefferson County Dodge County		(920)648-3054 (920)387-7860
DISASTER LOANS:			(800)621-FEMA
FARM BUREAU for JEFFERSON COUNTY			(920)648-2582
FARM CRISIS INFORMATION			(800)942-2474
FARMLAND PRESERVATION			(608)224-4633
HARVEST OF HOPE			(608)836-4633
HERS Customer Service	High-Risk Plan Regulation/Licensing/ Vocational Rehabilitation	(800)422-7146	(800)828-4777 (608)266-4541
NATIONAL FARM MEDICINE CENTER			(800)662-6900
U.S.D.A. (DEPARTMENT OF AGRICULTURE)	Jefferson County Dodge County Jefferson USDA		(920)674-2020 (920)386-2741 (920)674-6102
UW-EXTENSION	Jefferson County Dodge County		(920)674-7295 (920)386-3790
WI DEPARTMENT OF AGRICULTURE, TRADE AND CONSUMER PROTECTION	Consumer complaints/Hotline		(800)422-7128

WI FARM CENTER		(800)942-2474
WI FARM UNITY ALLIANCE & FINANCIAL ASSISTANCE		(715)288-6434
WI FARMERS UNION		(715)723-5561
WI NATIONAL FARMERS ORGANIZATIONS	(800)247-2554	(608)643-3341
WI WOMEN FOR AGRICULTURE		920)754-4510



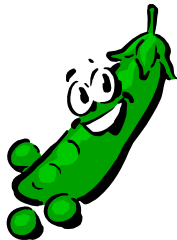
Farm Workers-Migrant and Seasonal

AURORA CENTER:	Emergency Housing		(920)361-1266
BUREAU OF MIGRANT SERVICES			(608)266-0002
CONNECTIONES LATINOS	Spanish Services Newsletter		(920)568-5018
EMPLOYMENT SERVICES			See Page 11
FAMILY HEALTH MEDICAL AND DENTAL CENTER	Formerly La Clinica Federally funded clinic established for seasonal and migrant farm workers		(920)787-5514 (800)942-5330
HEAD START	UMOS runs a program in the summer months.		See UMOS
HISPANIC CHAMBER OF COMMERCE			(414)643-6963
INTERPRETER FOR MEDICAL NEEDS	Watertown Area Health Services		(920) 261-4210
IMMIGRATION LAW			(800)375-5283
I D NUMBERS (W-7) - IRS			(608)829-5827
LA CASA DE ESPERANZA	Financial Assistance		(262)547-0887
LEGAL SERVICES	Legal Action of Wisconsin Family Law	(800)362-3904	(608)256-3304 (608)256-3258
LITERACY AWARENESS	Jefferson County Literacy Council Dodge County Literacy Council Madison Area Technical Colleges	Madison Watertown	(920)675-0500 (920)887-4631 (800)322-6282 (920)206-8000
(UMOS) UNITED MIGRANT OPPORTUNITIES SERVICES	Employment and training opportunities for permanent jobs and other basic needs services to migrants and seasonal farm workers		(800)279-8667
	Beaver Dam		(920)887-7233
	Madison		(608)249-1180
	Milwaukee		(414)389-6000



Financial Assistance

AMERICAN RED CROSS	Watertown Fort Atkinson		(920)261-1916 (920)563-3055
BUDGETING	Consumer Credit Counseling Service of Madison (CCCS) Community Action Coalition for South Central WI, Inc.	(888)868-5136	(608)252-1320 (920)262-9667
CHILD SUPPORT PROGRAM	Jefferson County Dodge County		(800)991-5530 (920)674-7255 (920)386-3640
COMMUNITY ACTION COALITION FOR SOUTH CENTRAL WISCONSIN, INC. (CAC)	114 E. Main St., Watertown	FAX (920)262-9559	(920)262-9667
COMMUNITY ACTION COUNCIL	Dodge County		(920)885-9559
DODGE COUNTY HUMAN SERVICES AND HEALTH DEPARTMENT			(920)386-3750
EARNED INCOME TAX CREDITS (EITC)			(800)829-1040
HOMESTEAD TAX CREDITS (HTC)			(608)266-8641
INTERNAL REVENUE SERVICE CENTER (IRS)			(800)829-1040
JEFFERSON COUNTY HUMAN SERVICES (JCHS)		TDD(920)674-5011	(920)674-3105
PROPERTY TAX DEFERRAL PROGRAM (PTDL)			(800)755-7835
REVERSE MORTGAGES	Contact AARP		(866)448-3611
SALVATION ARMY			(800)264-6412
ST. VINCENT DE PAUL SOCIETY	Jefferson Workforce Development Jefferson (Store only)		(920)674-7500 (920)674-4546
RESALE SALES STORES	Lake Mills Watertown		(920)648-2800 (920)261-2691
SOCIAL SECURITY ADMINISTRATION			(800)772-1213
UNEMPLOYMENT COMPENSATION OFFICE			(800)822-5246
WATERTOWN FAMILY AID			(920)262-8099
WISCONSIN DEPARTMENT OF REVENUE			(608)266-8641
WISCONSIN WORKS (W-2)	Jefferson County Dodge County		(920)674-7500 (920)386-3760



Food Assistance

FOOD PANTRIES	Cambridge Fort Atkinson Jefferson Johnson Creek Lake Mills Palmyra Rome-Sullivan Waterloo-Marshall Watertown Whitewater		(608)764-5935 (920)563-9555 (920)674-6822 (920)699-2471 (920)648-2800 (262)495-4540 (262)593-8745 (920)478-3041 (920)261-7226 (262)473-6120
---------------	----------------------------------------------------------------------------------------------------------------------------------------------------	--	------------------------------------------------------------------------------------------------------------------------------------------------------------------------

FOOD STAMPS	Jefferson County Workforce Development Dodge County Human Services	(920)674-7500 (920)386-3500
FREE MEAL SITES	Antioch Café – Jefferson Palmyra United Methodist Church Watertown Immanuel Lutheran Church	(920)253-0777 (262)495-2540 (920)261-7226
MOBILE MEALS/MEALS ON WHEELS	Jefferson County Dodge County Whitewater	(800)924-6407 (920)674-8134 (920)386-3750 (262)473-0500
SENIOR NUTRITION SITES	Fort Atkinson Jefferson Johnson Creek Juneau – Dodge County Lake Mills Palmyra Rome Waterloo Watertown	(920)563-7773 (920)675-0102 (920)699-4339 (920)386-3580 (920)648-2919 (262)495-3455 (262)593-5447 (920)478-4457 (920)261-7013
SHARE	Watertown	(800)548-2124 (920)262-0588
WATERTOWN FAMILY AID		(920)262-8099



Health Care

ABC FOR HEALTH		(800)585-4222
ADULT DAY CARE AND RESPITE CARE		see...SENIORS
AIDS- SEWAP (SOUTHEAST WISCONSIN AIDS PROJECT)		(800)924-6601
AMERICAN CANCER SOCIETY		(800)ACS-2345
AMERICAN DIABETES ASSOCIATION		(800)342-2383
AMERICAN LUNG ASSOCIATION OF WISCONSIN		(800)586-4872
ARTHRITIS FOUNDATION		(800)242-9945
ATTENTION DEFICIT SUPPORT GROUP		(920)262-1460
AUTISM SOCIETY OF WI		(414)427-9345
BADGER CARE	Health insurance plan for uninsured families	(920)674-7500
BADGER ASSOCIATION OF THE BLIND		(414)258-9200
BATTERER'S TREATMENT PROGRAM	Jefferson County Human Services Directions Counseling River City Psychological Services Dodge County	(920)674-3105 (920)262-4800 (920)261-3450 (920)386-3500
BLIND AND PHYSICALLY HANDICAPPED, REGIONAL LIBRARY		(800)242-8822
BLOOD PRESSURE MONITORING	Watertown Health Department Watertown Senior Center Health and Wellness Center	(920)262-8090 (920)262-8099 (920)262-8555

BRAIN INJURY ASSOCIATION OF WISCONSIN		(800)882-9282
CEREBRAL PALSY	(414)329-4500	(608)273-4434
CLINICS	Cambridge Clinic Fort Atkinson Center for Women's Health Fort Atkinson Medical Center Jefferson Family Medical Center Johnson Creek Medical Center Family Practice of Lake Mills Lake Mills Medical Center Lakewood Family Clinic Rock River Free Clinic UW Health Waterloo Waterloo Clinic Whitewater Family Practice Clinic Watertown Family Practice	(608)423-3251 (920)563-8900 (920)563-0888 (920)674-6000 (920)699-4000 (920)648-8393 (920)648-2391 (920)648-4518 (920)674-7275 (920)478-3776 (920)478-2141 (262)473-4548 (920)261-8500
CYSTIC FIBROSIS FOUNDATION		(800)472-7720
DENTAL HEALTH	Jefferson County Health Dept.	(920)563-4372
DODGE COUNTY HUMAN SERVICES AND HEALTH DEPARTMENT		(920)386-3500
DOMESTIC ABUSE ASSISTANCE/COUNSELING		
People Against Domestic Abuse (PADA)	Jefferson County	(800)228-7232
People Against a Violent Environment (PAVE)	Dodge County	(800)775-3785
DOMESTIC ABUSE ASSISTANCE/COUNSELING		(920)674-6768 (920)887-3785
DONOR NETWORK, WISCONSIN		(800)432-5405
EASTER SEAL WISCONSIN		(608)277-8288
ENVIRONMENTAL HEALTH PROGRAM	Jefferson County Health Department Watertown Health Department Dodge County Human Services	(920)674-7275 (920)262-8090 (920)386-3670
EPILEPSY ASSOCIATION OF SOUTHERN WISCONSIN		(800)693-2287
HEALTH CARE AGENCIES	Dodge County Human Services and Health Department Jefferson County Health Department Watertown (City) Public Health Department	(920)386-3670 (800)371-3090 (920)674-7275 (920)262-8090
HEALTH AND WELLNESS CENTER (HAWC)		(920)262-8555
HEARING IMPAIRED, OFFICE OF	TDD(608)267-7772	(608)243-5625
HOME HEALTH HOTLINE		(800)642-6552
HOSPICE CARE	Dodge County Jefferson County	(920)386-3750 (920)674-6255
HOSPITALS	Beaver Dam Community Hospital Columbus Community Hospital Fort Atkinson Memorial Hospital Lakeland Medical Center Memorial Hospital-Oconomowoc Watertown Memorial Hospital Veterans Hospital	(920)887-7181 (920)623-2200 (920)568-5000 (262)741-2000 (262)569-9400 (920)261-4210 (608)256-1901
IMMUNIZATION CLINICS	Jefferson County Health Dept. Dodge County Health Dept. Watertown Health Dept.	(920)674-7455 (920)386-3670 (920)262-8090
JEFFERSON HEALTH DEPT/PUBLIC HEALTH NURSES	(800)371-3090	(920)674-7275
LEAD PAINT/LEAD POISONING		(800)532-3394
LEUKEMIA SOCIETY OF AMERICA		(800)261-7399
MEDICAL ASSISTANCE (MA/MEDICAID)	Jefferson County Dodge County	(920)674-7500 (920)386-3760

MEDI-GAP HELPLINE		(800)242-1060
MEDICARE HOTLINE		(800)638-6833
MENTAL HEALTH COUNSELING CENTERS / CLINICS		
	CAMBRIDGE	(608)423-4700
	DODGE COUNTY HUMAN SERVICES	(920)386-3500
	FORT ATKINSON	
	Catholic Charities	(920)563-9375
	Integrated Counseling Center	(920)563-9375
	Lutheran Child and Family Services	(920)563-8680
	Lutheran Social Services	(920)563-9375
	Mental Health Consultants	(920)563-9542
	JEFFERSON	
	Allied Counseling Services	(920)674-9582
	Jefferson County Human Services	(920)674-3105
	LAKE MILLS	
	Family Resources Associates	(920)648-3896
	WATERTOWN	
	Directions Counseling Center	(920)262-4800
	Family Resources Associates	(920)261-4100
	Lutheran Social Services	(920)261-8961
	River City Psychological Services	(920)261-3450
	Temenos Counseling Services	(920)261-5824
	Watertown Family Center	(920)261-2450
	WHITEWATER	
	Family Resources Associates	(262)473-6465
	Wisconsin Community Mental Health Counseling Center	(262)473-6119
VETERAN CENTER	(414)344-5504	(608)264-5342
NAMI WISCONSIN (National Alliance on Mental Illness)		(800)236-2988
	Madison	(608)268-6000
	Jefferson	(920)674-6079
MULTIPLE SCLEROSIS		(800)532-7667
MUSCULAR DYSTROPHY ASSOCIATION		(414)453-7600
NURSING HOMES:		
	Beverly Terrace Health and Rehabilitation Center, Watertown	(920)261-9220
	Black Hawk Senior Residence, Fort Atkinson	(920)563-1480
	Clearview Long Term Care and Rehabilitation Center, Juneau	(920)386-3400
	Countryside Home, Jefferson	(920)674-3170
	Fairhaven Retirement Community, Whitewater	(262)473-2140
	Highland House, Watertown	(920)262-4820
	London Lodge Inc., Cambridge	(920)648-3171
	Marcella Manor, Watertown	(920)262-1671
	Marquardt Memorial Manor, Watertown	(920)261-0400
	Welbourne Hall, Watertown	(920)261-1211
	Wellington Place, Fort Atkinson	(920)563-6959
	Willowbrook Nursing Home, Lake Mills	(920)648-8344
OCCUPATIONAL HEALTH	Watertown Occupational Health Services Rehabilitation in Motion	(920)262-2783 (920)262-9970
PERSONAL CARE PROGRAM	Jefferson County Dodge County Watertown Home Health	(920)674-7188 (920)386-3500 (920)262-4262
PLANNED PARENTHOOD	Johnson Creek	(920)699-4720
POISON CONTROL CENTER		(800)815-8855
PREGNANCY COUNSELING – ALPHA	(800)924-6073	(920)261-9207
SEXUALLY TRANSMITTED DISEASES (STD)		(800)227-8922

TELE-CARE	Daily contact by phone:	Fort Atkinson Health Service Watertown Memorial Hospital	(920)568-5277 (920)262-4214
TELECOMMUNICATIONS RELAY SYSTEMS, WI		Customer Service Voice Customer Service	711 (800)283-9877 (800)395-9877
TUBERCULOSIS		Watertown Health Department	(920)262-8090
VISITING NURSE SERVICE			(920)674-7275
WATERTOWN HEALTH DEPARTMENT:			(920)206-8090



Housing Assistance Programs

BRIAR PATCH, INC	Emergency TEEN Shelter	(800)798-1126	(920)261-1126
BUDGET COUNSELING	Consumer Credit Counseling Services Community Action Coalition –Financial Literacy		(888)868-5136 (920)262-9667
BUILDING INSPECTORS	Fort Atkinson Palmyra Watertown	(920)563-7760 (920)495-8316 (920)262-4060	Jefferson Waterloo Whitewater (920)674-7727 (920)478-3025 (262)473-0500

COMMUNITY ACTION COALITION FOR SOUTH CENTRAL WI, INC. (CAC) **(920)262-9667**
 Provides housing counseling, landlord/tenant mediation, information about fair housing, landlord/tenant rights and responsibilities, WHEDA Section 8 Voucher Program, rent subsidy programs, entry assistance, eviction prevention and emergency shelter.

COMMUNITY BASED RESIDENTIAL FACILITIES (CBRF)	Life care for persons unable to live independently		
Dodge County Human Services:			(920)386-3750
Cambridge:	Autumn Winds of Oakland		(920)423-9300
	London Lodge I		(920)648-3171
	London Lodge II		(920)648-3171
Fort Atkinson:	Abilities, Inc.: Birch Terrace		(920)563-8554
	Black Hawk Senior Residence		(920)568-0197
	Sienna Crest Assisted Living		(920)568-1840
	Waterman Wing		(920)568-8291
Lake Mills	Brook Gardens Assisted Living		(920)648-5760
Watertown	Bethesda Lutheran Group		(920)261-3050
	Doherty Home		(920)206-9034
Ixonia:	Margaret Ruth Homes		(920)569-5533
Jefferson	Lueder Haus		(920)674-3105
	St. Coletta		(920)674-4330
	Sylvan Crossing of Jefferson		(608)276-3449
Oconomowoc:	Galley House		(262)569-5515
Whitewater:	Sapphire House		(262)473-8144
	Strawberry Hill		(715)832-5085

CONSUMER PROTECTION (Dept. of Ag.) (800)422-7128

EMERGENCY SHELTER	For Jefferson County Dodge County Sheriff Jefferson County Sheriff	See Homeless Shelter (below)
(Local Police Dept's)	Jefferson Lake Mills Watertown Whitewater Community Action Coalition (CAC) St. Vincent de Paul	(920)386-4455 (920)674-7310 (920)674-7707 (920)648-2354 (920)261-6660 (262)473-0555 (920)262-9667 See Page 14

EVICTON PREVENTION (920)262-9667
 Community Action Coalition (CAC)
 St. Vincent de Paul See Page 14

HABITAT FOR HUMANITY	Lake Mills	(920)648-3788
HOMELESS SHELTER	(For Information ONLY) Community Action Coalition Jefferson County Human Services Jefferson County Workforce DC. Salvation Army Red Cross	(920)262-9667 (920)674-3105 (920)674-7500 (414)723-2349 (414)542-6672
AREA SHELTERS	Dane County: Salvation Army Shelter Families Porchlight Drop-In Shelter Single Men Interfaith Hospitality Network Families Safe Haven Mentally Ill Dom Abuse Intervention Svc DV Families Dodge County: Open Arms, Beaver Dam PAVE (Domestic Abuse) (800)775-3785 Rock/Walworth County: Salvation Army Beloit Sparrow's Nest Beloit House of Mercy Janesville Hands of Faith Beloit Twin Oaks YWCA Waukesha County: Sister House (Domestic Abuse) Hebron House Salvation Army (men)	(608)256-2321 (608)255-2960 (608)294-7998 (608)241-9447 (608)251-4445 (920)885-3999 (920)887-3785 (608)365-8215 (608)362-8215 (608)754-0045 (608)363-0683 (262)882-3662 (608)752-2583 (262)542-3828 (262)549-8722 (262)547-7367
HOUSING AUTHORITIES	Jefferson Housing Authority Jefferson County Housing Authority - Community Action Coalition Watertown Housing Authority	(920)674-5294 (920)262-9667 (920)261-7795
HOUSING DISCRIMINATION	Workforce Development Center	(920)674-7500
HUD - U.S. DEPARTMENT OF HOUSING AND URBAN DEPARTMENT		(414)297-3114
LA CASA DE ESPERANZA	Help with weatherization and home ownership	(262)547-0887
LANDLORD/TENANT RIGHTS AND RESPONSIBILITIES	Community Action Coalition Consumer Protection Legal Action	(920)262-9667 (800)422-7128 (800)362-3904
TENANT RESOURCE CENTER	Legal Information	(608)257-0006
WHEDA		(800)334-6873



Housing - Low Income/ Elderly/ Disabled/Handicapped

(F) Low Income Family - (E) Elderly - (H) Handicapped - (D) Disabled

AREA HOUSING AUTHORITIES	DODGE COUNTY JEFFERSON COUNTY LAKE MILLS CITY WALWORTH COUNTY WATERTOWN CITY WAUKESHA COUNTY	(920)386-2866 (920)674-5294 (920)648-5064 (262)723-6123 (920)261-7795 (262)542-2262
BEAVER DAM (DODGE COUNTY)	(F,E,H) Bayshore Apartments (F) Lake View Apartments	(920)887-1701 (920)885-5052
FORT ATKINSON (JEFFERSON COUNTY)	(F,E,D,H) Atkinson Square (E,D,H) Black Hawk Senior Residence –Assisted Living	(920)563-8980 (920)563-2440

	(F)	Parkview Apartments	(920)563-8253
	(E,H)	Riverview Manor Apartments	(920)568-8862
	(E,D,H)	Rockland Court Apartments	(920)563-8253
	(F,E,D,H)	Rockwell Court Apartments	(920)691-0163
	(E,H)	Woodside Apartments I and II	(608)233-7544 (920)568-9858
IXONIA (JEFFERSON/WAUKESHA COUNTIES)			
	(E,H)	Sunrise Meadows	(262)567-3265 (920)261-9630
JEFFERSON (JEFFERSON COUNTY)			
	(E,D,H)	Alverno Housing Corp. - St. Colletta	(920)674-4330
	(F)	Copeland-Ryder Apartments	(920)674-6789
	(E,D,H)	Fairview Senior Housing	(920)674-2997
	(F,E,D,H)	Jefferson Commons	(920)674-4450
	(F,E,D,H)	Jefferson Oaks West	(920)674-4450
	(E,D,H)	River Crest Apartments	(920)674-5294
	(F,E,H)	Rockview Apartments	(920)674-9525
	(F)	Vista Flores (Migrant Workers)	(800)938-0617
JOHNSON CREEK (JEFFERSON COUNTY)			
	(E,D,H)	Johnson Creek Apartments	(920)699-2514
LAKE MILLS (JEFFERSON COUNTY)			
	(E)	Oak Wood Apartments I and II	(920)648-5581
	(E,H)	Rock Lake Manor:	(920)648-5064
	(E)	Trinity Pines Retirement Center	(920)648-3212
PALMYRA (JEFFERSON COUNTY)			
	(E,D,H)	Palmyra Park Apartments I and II	(608)233-7544 (920)568-9858
SULLIVAN (JEFFERSON COUNTY)			
	(E)	Pine Meadows Apartments	(262)594-2729
WATERTOWN (JEFFERSON/DODGE COUNTIES)			
	(F)	Community Action Coalition (CAC) WHEDA Section 8	(920)262-9667
	(F)	Carlton Hotel	(920)261-9081
	(E)	Johnson Arms	(920)261-7795
	(F,E,D,H)	Lakeside Terrace/Wttn. Square	(920)262-9661
	(E,D,H)	Mueller Apartments	(920)262-0001
	(E,H)	Riverview Commons	(920)262-0304
	(F)	Washington Hotel	(920)261-0780
	(F,D,H)	Watertown East	(920)206-8541
	(F,E,D,H)	Watertown Meadows Apartments	(920)262-9661
WATERLOO (JEFFERSON/DODGE COUNTIES)			
	(F,E,D,H)	Waterloo Green Apartments	(920)478-3927
	(E,D,H)	Waterloo Meadows Apartments	(920)253-8308
WHITEWATER (JEFFERSON/WALWORTH COUNTIES)			
	(F,E,D,H)	Whitewater Court	(262)473-4233
	(F,E,D,H)	Whitewater Woods	(262)473-4296



Legal Services

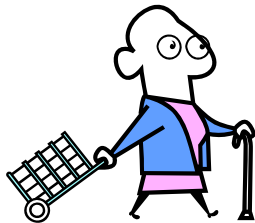
ATTORNEY GENERALS OFFICE	Department of Justice	(608)266-1221
DISTRICT ATTORNEY	Jefferson County Dodge County	(920)674-7220 (920)386-3620
FAMILY COURT COMMISSIONER	Jefferson County Dodge County	(920)674-7290 (920)386-3620
LAWYER REFERRAL AND INFORMATION SERVICE		(800)362-9082
LEGAL ACTION OF WISCONSIN		(800)362-3904
PUBLIC DEFENDERS	Jefferson County Dodge County	(920)674-2800 (920)386-5577
PROBATION AND PAROLE OFFICE	Jefferson	(920)674-7840

	Watertown	(920)261-6660
SMALL CLAIMS COURT	Jefferson County	(920)674-7163
VICTIM / WITNESS PROGRAM	Jefferson County	(920)674-7220
WISCONSIN EQUAL RIGHTS DIVISION (ERD)		(608)266-6860



Political Representatives

PRESIDENT	GEORGE W. BUSH	(202)456-1414
VICE PRESIDENT	Dick Cheney	(202)456-1414
WISCONSIN GOVERNOR	Jim Doyle	(608)261-0611
FEDERAL REPRESENTATIVES FOR JEFFERSON COUNTY		
U.S. SENATORS	(Serves both Jefferson and Dodge County residents)	
	(D) Herb Kohl Madison	(608)264-5338
	(D) Russell Feingold Wausau	(715)848-5660
U.S. MEMBERS OF CONGRESS	(Serves both Jefferson and Dodge County residents)	
	(D) Tammy Baldwin Madison	(608)258-9800
	(R) Tom Petri Oshkosh	(920)231-6333
	(R) F. James Sensenbrenner, Jr. Brookfield	(262)784-1111
WISCONSIN REPRESENTATIVES FOR JEFFERSON COUNTY STATE SENATORS		
	(R) Scott Fitzgerald	(608)266-5660
	(R) Andy Jorgensen	(608)266-3790
LEGISLATIVE HOT LINE	Information	(800)362-9472
JEFFERSON COUNTY CLERK	For local/county information	(920)674-7140



Seniors

AMERICAN ASSOCIATION for RETIRED PERSONS (AARP)		(608)251-2277
ADULT DAY CARE:	Golden Options of Adults	(920)674-8252
	Watertown Hospital	(920)262-4262
	Watertown Highland House	(920)262-4823
ADULT FAMILY HOME (AFH)	Human Services	(920)674-3105
BENEFIT SPECIALIST	Elderly Service Unit	Jefferson County
		Dodge County
		(920)674-8135
		(920)386-3580
ELDER ABUSE	Jefferson County Human Services	(920)674-3105
	Dodge County Health and Human Services	(920)386-3580
ELDER CARE LOCATOR		(800)677-1116
EXPERIENCE WORKS (Formerly Green Thumb)		(715)743-4636

FOOT CARE CLINIC FOR THE ELDERLY		(800)371-3090
MEDICARE HOTLINE		(800)633-4227
MEDI-GAP HELPLINE		(800)638-6833
MEDICAL AIDES	American Cancer Society Fort Atkinson Memorial Health Services Veterans Service Office Wheelchair Recycling Project	(800)422-6237 (920)568-5284 (920)674-7240 (608)243-1785
MOBILE MEALS / MEALS ON WHEELS	Jefferson County Dodge County	(920)674-3105 (920)386-3580
NATIONAL COUNCIL ON AGING		(800)424-9046
NURSING HOMES		See Health Care
SENIOR NUTRITION SITES	Fort Atkinson Jefferson Johnson Creek Juneau – Dodge County Lake Mills Palmyra Rome Waterloo Watertown	(920)563-7773 (920)675-0102 (920)699-4339 (920)386-3580 (920)648-2919 (262)495-3455 (262)593-5447 (920)478-4457 (920)261-7013
PARKINSON'S ASSOCIATION		(800)972-5455
PARTNERCARE	Jefferson County Elderly Services Dodge County Human Services	(920)674-3105 (920)386-3580
PATIENT ASSISTANCE PROGRAM	Help w/ prescription meds	(800)762-4636
PERSONAL CARE PROGRAM	Jefferson County Dodge County Watertown Home Health	(920)674-7188 (920)386-3500 (920)262-4262
SENIOR CENTERS	Fort Atkinson Jefferson Lake Mills Watertown	(920)563-7773 (920)674-7728 (920)648-3585 (920)262-8099
SENIOR VOUCHER PROGRAM	Farmer's Market	(920)262-9667
SOCIAL SECURITY ADMINISTRATION		(800)772-1213
TELE-CARE	Daily contact by phone: Fort Atkinson Health Service Watertown Memorial Hospital	(920)568-5277 (920)262-4214



Transportation

TAXI SERVICES	Jefferson Fort Atkinson Lake Mills Watertown	(920)563-9188 (920)563-6303 (920)648-4420 (920)261-7433
VETERANS	Dodge County Jefferson County	(920)386-3798 (920)674-7240
VOLUNTEER DRIVER FROM COUNTY HUMAN SERVICES		

For medical appointments

Jefferson
Dodge

(920)674-8104
(920)386-3832



Utilities and Energy

DIGGERS HOTLINE		(800)242-8511
EARLY ALERT PROGRAM		(800)236-9874
ENERGY COMPANIES	Jefferson Water and Electric Lake Mills Light and Water Waterloo Electric Company WeEnergies (Gas and Electric)	(920)674-7711 (920)648-2344 (920)478-2260 (800)242-9137 TDD(800)625-3363
	Wisconsin Power and Light Company	(800)862-6222 TDD(800)654-3440
ENERGY ASSISTANCE PROGRAM	Jefferson County Dodge County	(866)432-8947 (920)887-7990
PUBLIC SERVICE COMMISSION (PSC)		(608)266-5431 (888)816-3831
WEATHERIZATION PROGRAMS	La Casa de Esperanza	(262)970-0539